

# Human MSLN/Mesothelin Protein

Cat. No. MSL-HM480

## Description

Source	Recombinant Human MSLN/Mesothelin Protein is expressed from HEK293 with His tag and Avi tag at the C-Terminus.
	It contains Glu296-Gly580.
Accession	Q13421-2
Molecular Weight	The protein has a predicted MW of 35.2 kDa. Due to glycosylation, the protein migrates to 40-50 kDa based on Bis-Tris PAGE result.
Endotoxin	Less than 1 EU per µg by the LAL method.
Purity	> 95% as determined by Bis-Tris PAGE
	> 95% as determined by HPLC

## Formulation and Storage

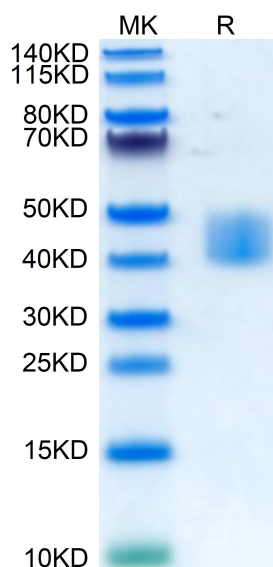
Formulation	Lyophilized from 0.22µm filtered solution in PBS (pH 7.4). Normally 8% trehalose is added as protectant before lyophilization.
Reconstitution	Dissolve the lyophilized protein in distilled water. Please refer to the Certificate of Analysis for detailed instructions.
Storage	-20 to -80°C for 12 months as supplied from date of receipt. -80°C for 3 months after reconstitution. Recommend to aliquot the protein into smaller quantities for optimal storage. Please minimize freeze-thaw cycles.

## Background

Mesothelin, also known as MSLN, is a protein that in humans is encoded by the MSLN gene. Cloning studies showed that the mesothelin gene encodes a precursor protein that is processed to yield mesothelin which is attached to the cell membrane by a glycosylphosphatidylinositol linkage and a 31-kDa shed fragment named megakaryocyte-potentiating factor (MPF). Although it has been proposed that mesothelin may be involved in cell adhesion, its biological function is not known. A knockout mouse line that lacks mesothelin reproduces and develops normally.

## Assay Data

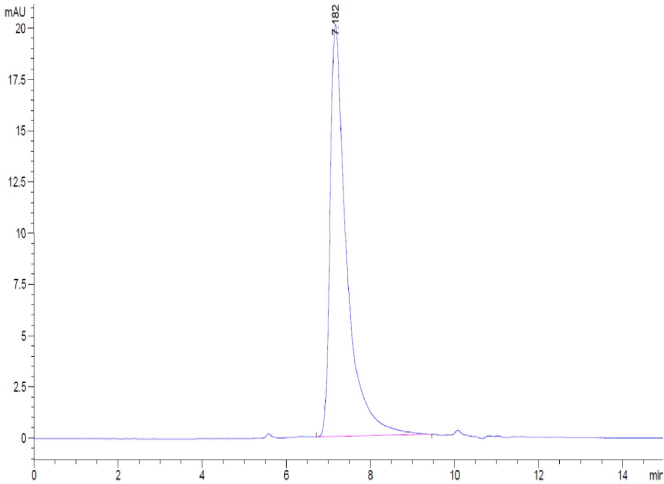
### Bis-Tris PAGE



Human MSLN on Bis-Tris PAGE under reduced condition. The purity is greater than 95%.

### SEC-HPLC

Assay Data

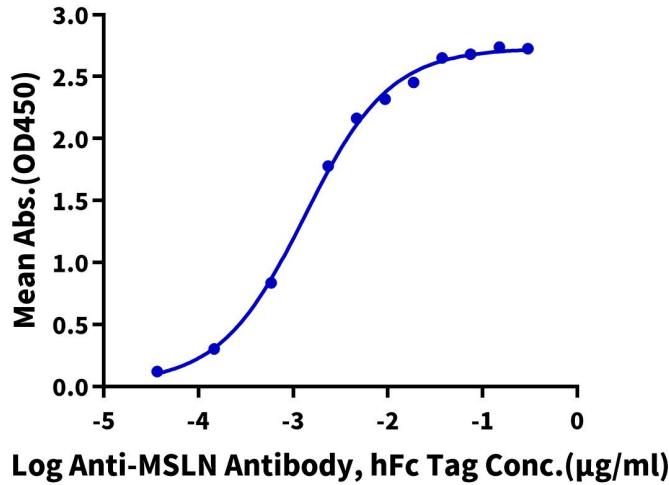


The purity of Human MSLN was greater than 95% as determined by SEC-HPLC.

ELISA Data

Human MSLN, His Tag ELISA

0.1µg Human MSLN, His Tag Per Well



Immobilized Human MSLN, His Tag at 1µg/ml (100µl/Well). Dose response curve for Anti-MSLN Antibody, hFc Tag with the EC50 of 1.3ng/ml determined by ELISA (QC Test).